

Appendix 4: Calculated Priority Risk Index (CPRI)

Flooding

**Calculated Priority Risk Index (CPRI)
categories and risk levels**



CPRI Category	Degree of Risk			Assigned Weighting Factor
	Level ID	Description	Index Value	
Probability	Unlikely	<ul style="list-style-type: none"> Extremely rare with no documented history of occurrences or events Annual probability of less than 0.001 	1	45%
	Possibly	<ul style="list-style-type: none"> Rare occurrences with at least one documented or anecdotal historic event Annual probability that is between 0.01 and 0.001 	2	
	Likely	<ul style="list-style-type: none"> Occasional occurrences with at least two or more documented historic events Annual probability that is between 0.1 and 0.01 	3	
	Highly Likely	<ul style="list-style-type: none"> Frequent events with a well documented history of occurrence Annual probability that is greater than 0.1 	4	
Magnitude/Severity	Negligible	<ul style="list-style-type: none"> Negligible property damages (less than 5% of critical and non-critical facilities and infrastructure) Injuries or illnesses are treatable with first aid and there are no deaths Negligible quality of life lost Shut down of critical facilities for less than 24 hours 	1	30%
	Limited	<ul style="list-style-type: none"> Slight property damages (greater than 5% and less than 25% of critical and non-critical facilities and infrastructure) Injuries or illnesses do not result in permanent disability and there are no deaths Moderate quality of life lost Shut down of critical facilities for more than 1 day and less than 1 week 	2	
	Critical	<ul style="list-style-type: none"> Moderate property damages (greater than 25% and less than 50% of critical and non-critical facilities and infrastructure) Injuries or illnesses result in permanent disability and at least one death Shut down of critical facilities for more than 1 week and less than 1 month 	3	
	Catastrophic	<ul style="list-style-type: none"> Severe property damages (greater than 50% of critical and non-critical facilities and infrastructure) Injuries or illnesses result in permanent disability and multiple deaths Shut down of critical facilities for more than 1 month 	4	
Warning Time	Less than 6 hours	Self explanatory	4	15%
	6 to 12 hours	Self explanatory	3	
	12 to 24 hours	Self explanatory	2	
	More than 24 hours	Self explanatory	1	
Duration	Less than 6 hours	Self explanatory	1	10%
	Less than 24 hours	Self explanatory	2	
	Less than one week	Self explanatory	3	
	More than one week	Self explanatory	4	

Appendix 4: Calculated Priority Risk Index (CPRI) cont.

SEVERE Temperature (Extreme Heat)

Calculated Priority Risk Index (CPRI) categories and risk levels



CPRI Category	Degree of Risk			Assigned Weighting Factor
	Level ID	Description	Index Value	
Probability	Unlikely	<ul style="list-style-type: none"> Extremely rare with no documented history of occurrences or events. Annual probability of less than 0.001 	1	45%
	Possibly	<ul style="list-style-type: none"> Rare occurrences with at least one documented or anecdotal historic event. Annual probability that is between 0.01 and 0.001 	2	
	Likely	<ul style="list-style-type: none"> Occasional occurrences with at least two or more documented historic events Annual probability that is between 0.1 and 0.01 	3	
	Highly Likely	<ul style="list-style-type: none"> Frequent events with a well documented history of occurrence. Annual probability that is greater than 0.1 	4	
Magnitude/Severity	Negligible	<ul style="list-style-type: none"> Negligible property damages (less than 5% of critical and non-critical facilities and infrastructure) Injuries or illnesses are treatable with first aid and there are no deaths Negligible quality of life lost. Shut down of critical facilities for less than 24 hours 	1	30%
	Limited	<ul style="list-style-type: none"> Slight property damages (greater than 5% and less than 25% of critical and non-critical facilities and infrastructure) Injuries or illnesses do not result in permanent disability and there are no deaths Moderate quality of life lost Shut down of critical facilities for more than 1 day and less than 1 week 	2	
	Critical	<ul style="list-style-type: none"> Moderate property damages (greater than 25% and less than 50% of critical and non-critical facilities and infrastructure) Injuries or illnesses result in permanent disability and at least one death Shut down of critical facilities for more than 1 week and less than 1 month 	3	
	Catastrophic	<ul style="list-style-type: none"> Severe property damages (greater than 50% of critical and non-critical facilities and infrastructure) Injuries or illnesses result in permanent disability and multiple deaths Shut down of critical facilities for more than 1 month 	4	
Warning Time	Less than 6 hours	Self explanatory	4	15%
	6 to 12 hours	Self explanatory	3	
	12 to 24 hours	Self explanatory	2	
	More than 24 hours	Self explanatory	1	
Duration	Less than 6 hours	Self explanatory	1	10%
	Less than 24 hours	Self explanatory	2	
	Less than one week	Self explanatory	3	
	More than one week	Self explanatory	4	

Appendix 4: Calculated Priority Risk Index (CPRI) cont.

SEVERE WEATHER (Thunderstorms and High Winds)

Calculated Priority Risk Index (CPRI) categories and risk levels



CPRI Category	Degree of Risk			Assigned Weighting Factor
	Level ID	Description	Index Value	
Probability	Unlikely	<ul style="list-style-type: none"> Extremely rare with no documented history of occurrences or events Annual probability of less than 0.001 	1	45%
	Possibly	<ul style="list-style-type: none"> Rare occurrences with at least one documented or anecdotal historic event Annual probability that is between 0.01 and 0.001 	2	
	Likely	<ul style="list-style-type: none"> Occasional occurrences with at least two or more documented historic events Annual probability that is between 0.1 and 0.01 	3	
	Highly Likely	<ul style="list-style-type: none"> Frequent events with a well documented history of occurrence Annual probability that is greater than 0.1 	4	
Magnitude/Severity	Negligible	<ul style="list-style-type: none"> Negligible property damages (less than 5% of critical and non-critical facilities and infrastructure) Injuries or illnesses are treatable with first aid and there are no deaths Negligible quality of life lost Shut down of critical facilities for less than 24 hours 	1	30%
	Limited	<ul style="list-style-type: none"> Slight property damages (greater than 5% and less than 25% of critical and non-critical facilities and infrastructure) Injuries or illnesses do not result in permanent disability and there are no deaths Moderate quality of life lost Shut down of critical facilities for more than 1 day and less than 1 week. 	2	
	Critical	<ul style="list-style-type: none"> Moderate property damages (greater than 25% and less than 50% of critical and non-critical facilities and infrastructure) Injuries or illnesses result in permanent disability and at least one death Shut down of critical facilities for more than 1 week and less than 1 month 	3	
	Catastrophic	<ul style="list-style-type: none"> Severe property damages (greater than 50% of critical and non-critical facilities and infrastructure) Injuries or illnesses result in permanent disability and multiple deaths Shut down of critical facilities for more than 1 month 	4	
Warning Time	Less than 6 hours	Self explanatory	4	15%
	6 to 12 hours	Self explanatory	3	
	12 to 24 hours	Self explanatory	2	
	More than 24 hours	Self explanatory	1	
Duration	Less than 6 hours	Self explanatory	1	10%
	Less than 24 hours	Self explanatory	2	
	Less than one week	Self explanatory	3	
	More than one week	Self explanatory	4	

Appendix 4: Calculated Priority Risk Index (CPRI) cont.

Wildfires

**Calculated Priority Risk Index (CPRI)
categories and risk levels**



CPRI Category	Degree of Risk			Assigned Weighting Factor
	Level ID	Description	Index Value	
Probability	Unlikely	<ul style="list-style-type: none"> Extremely rare with no documented history of occurrences or events Annual probability of less than 0.001 	1	45%
	Possibly	<ul style="list-style-type: none"> Rare occurrences with at least one documented or anecdotal historic event Annual probability that is between 0.01 and 0.001 	2	
	Likely	<ul style="list-style-type: none"> Occasional occurrences with at least two or more documented historic events Annual probability that is between 0.1 and 0.01 	3	
	Highly Likely	<ul style="list-style-type: none"> Frequent events with a well documented history of occurrence Annual probability that is greater than 0.1 	4	
Magnitude/Severity	Negligible	<ul style="list-style-type: none"> Negligible property damages (less than 5% of critical and non-critical facilities and infrastructure) Injuries or illnesses are treatable with first aid and there are no deaths Negligible quality of life lost Shut down of critical facilities for less than 24 hours 	1	30%
	Limited	<ul style="list-style-type: none"> Slight property damages (greater than 5% and less than 25% of critical and non-critical facilities and infrastructure) Injuries or illnesses do not result in permanent disability and there are no deaths Moderate quality of life lost Shut down of critical facilities for more than 1 day and less than 1 week 	2	
	Critical	<ul style="list-style-type: none"> Moderate property damages (greater than 25% and less than 50% of critical and non-critical facilities and infrastructure) Injuries or illnesses result in permanent disability and at least one death Shut down of critical facilities for more than 1 week and less than 1 month 	3	
	Catastrophic	<ul style="list-style-type: none"> Severe property damages (greater than 50% of critical and non-critical facilities and infrastructure) Injuries or illnesses result in permanent disability and multiple deaths Shut down of critical facilities for more than 1 month 	4	
Warning Time	Less than 6 hours	Self explanatory	4	15%
	6 to 12 hours	Self explanatory	3	
	12 to 24 hours	Self explanatory	2	
	More than 24 hours	Self explanatory	1	
Duration	Less than 6 hours	Self explanatory	1	0%
	Less than 24 hours	Self explanatory	2	
	Less than one week	Self explanatory	3	
	More than one week	Self explanatory	4	

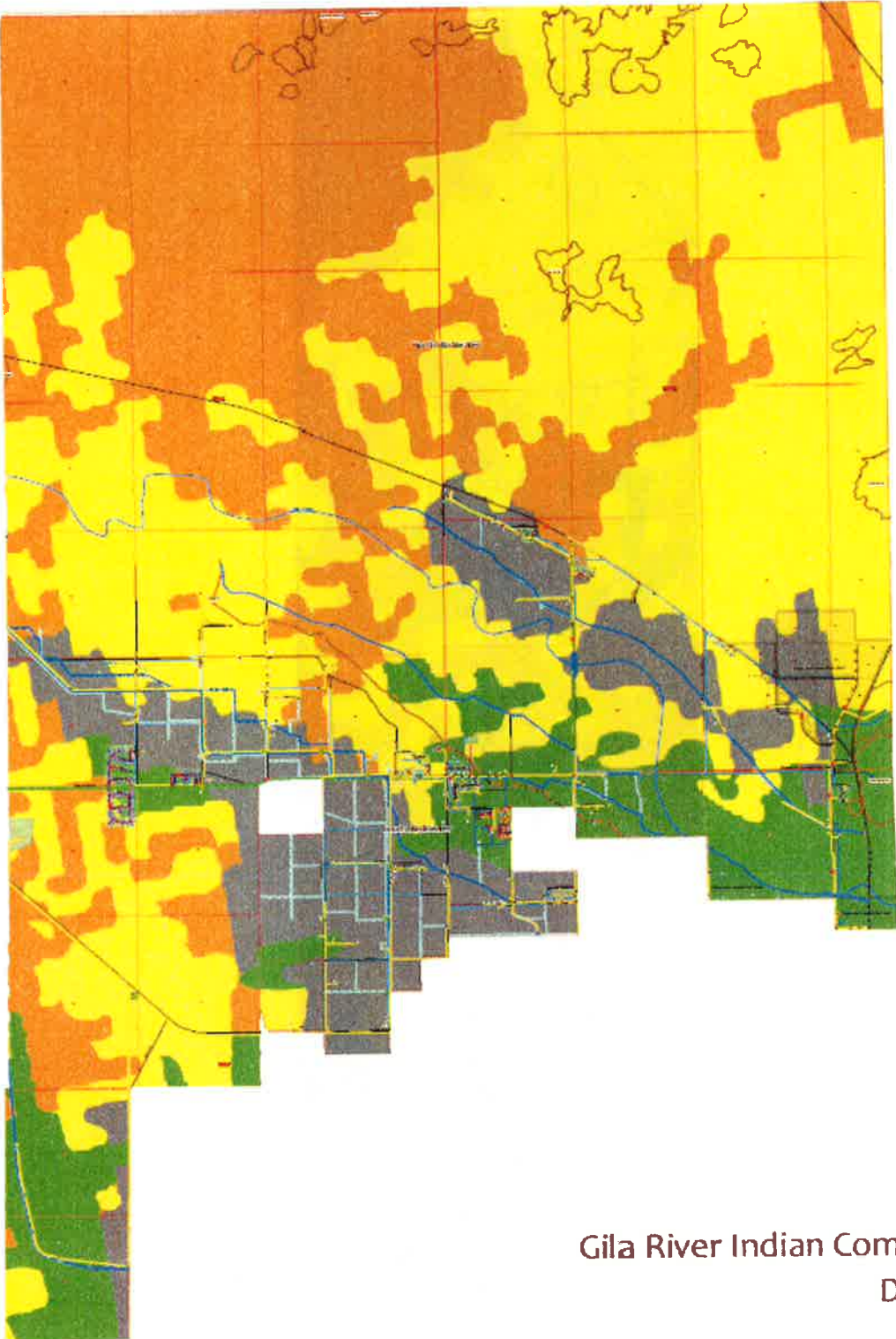
Appendix 5: Wild Land Fire Potential Maps

Legend

Wildland Fire Potential 2013

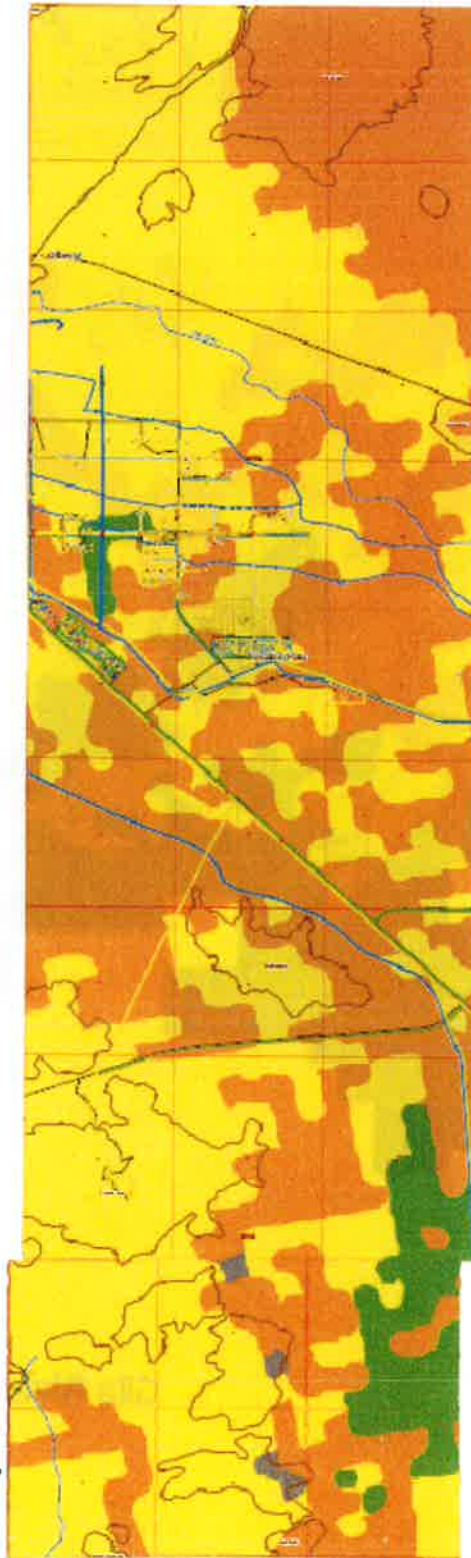
-  Very High
-  High
-  Moderate
-  Low
-  Non-Burnable

Appendix 5: Wild Land Fire Potential Maps cont.



Gila River Indian Community
District 1

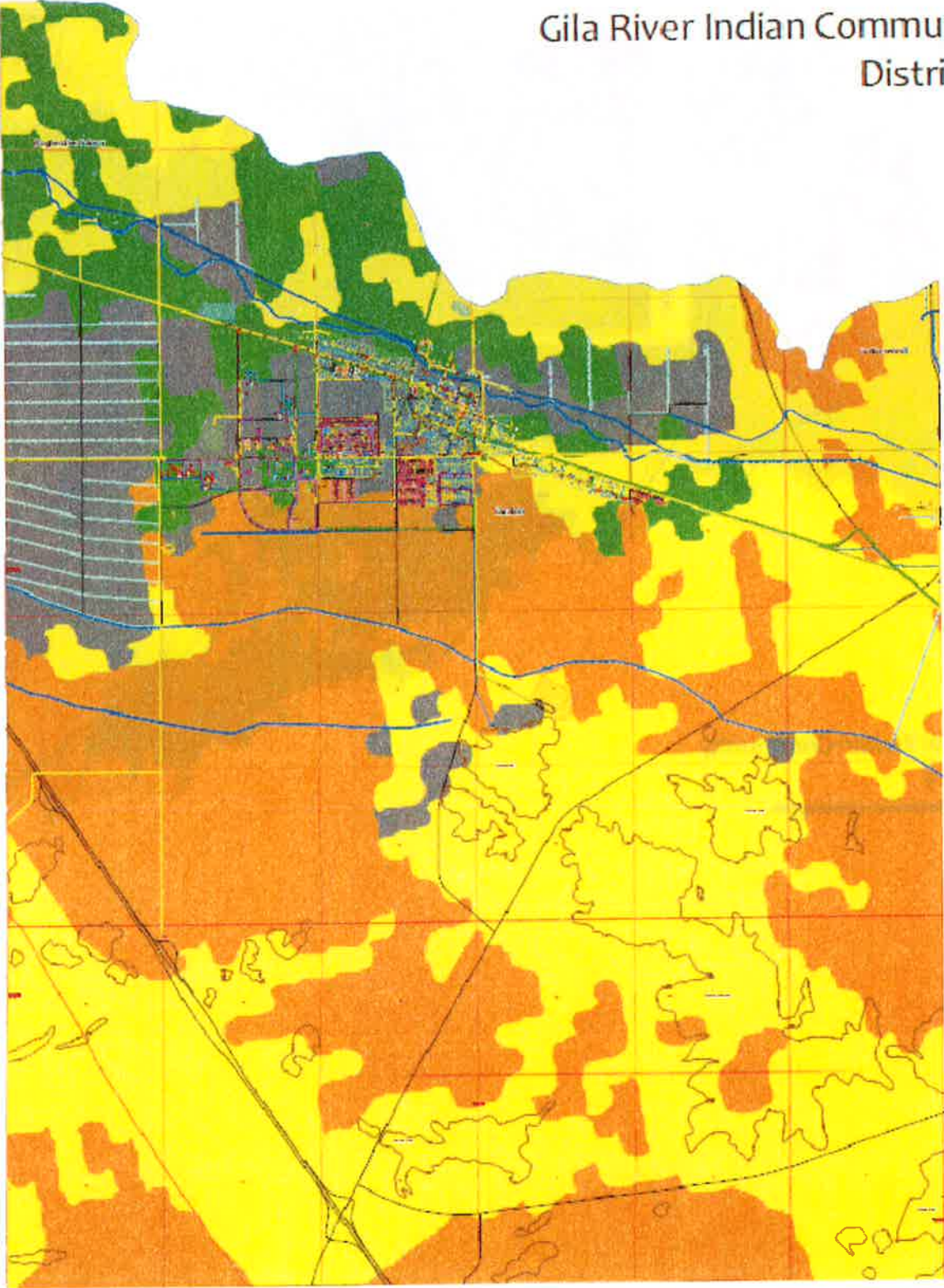
Appendix 5: Wild Land Fire Potential Maps cont.



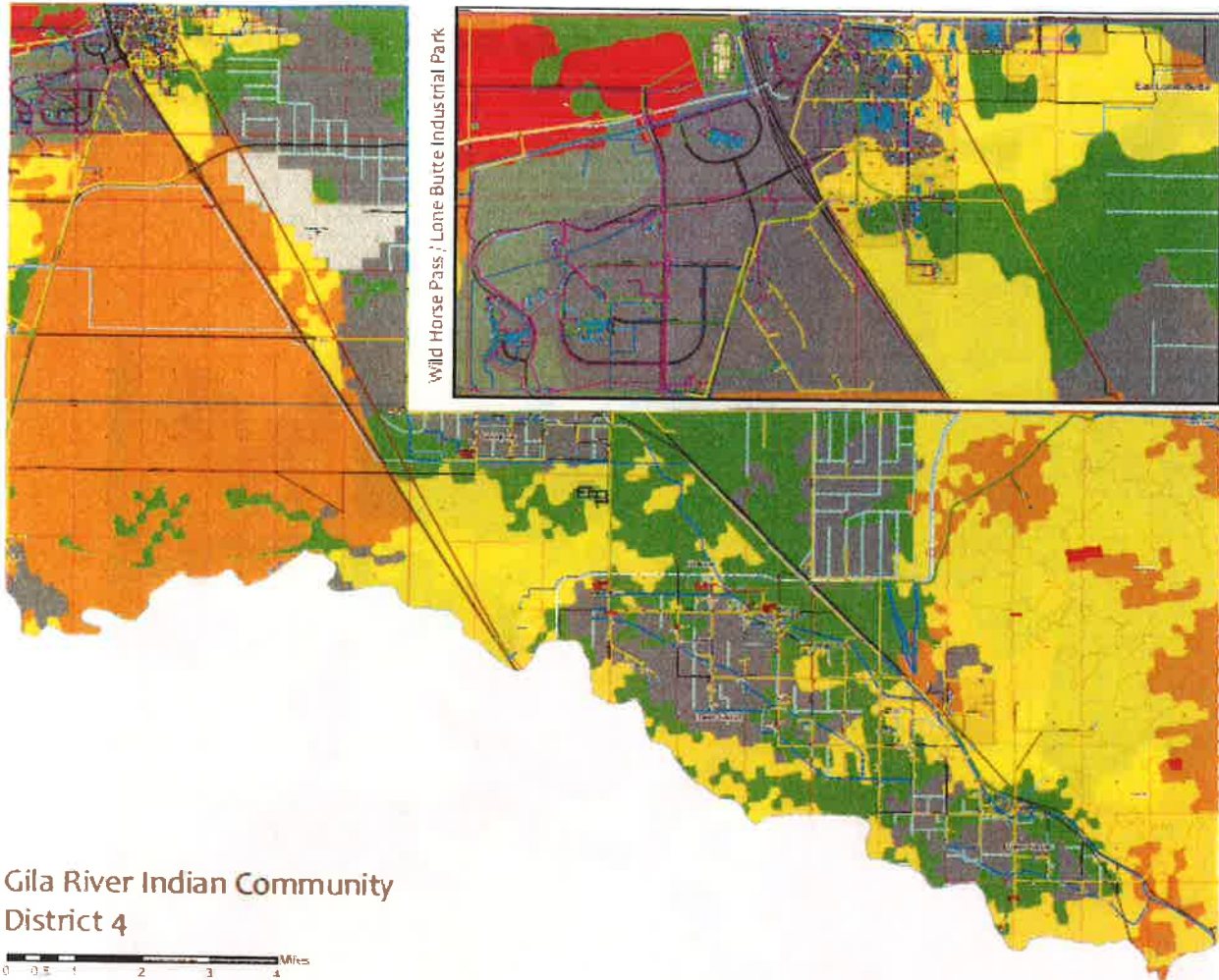
Gila River Indian Community
District 2

Appendix 5: Wild Land Fire Potential Maps cont.

Gila River Indian Community
District 3

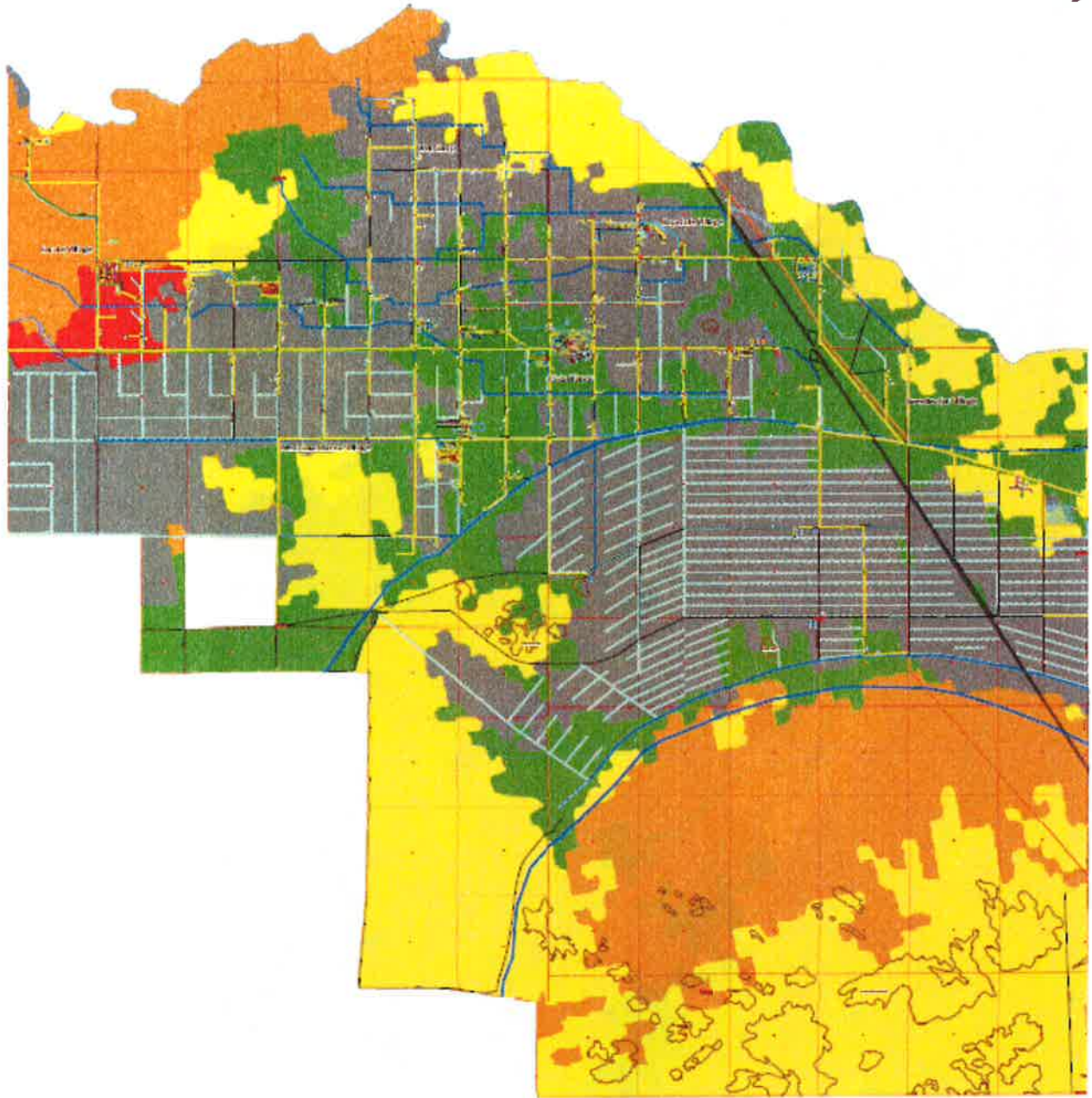


Appendix 5: Wild Land Fire Potential Maps cont.



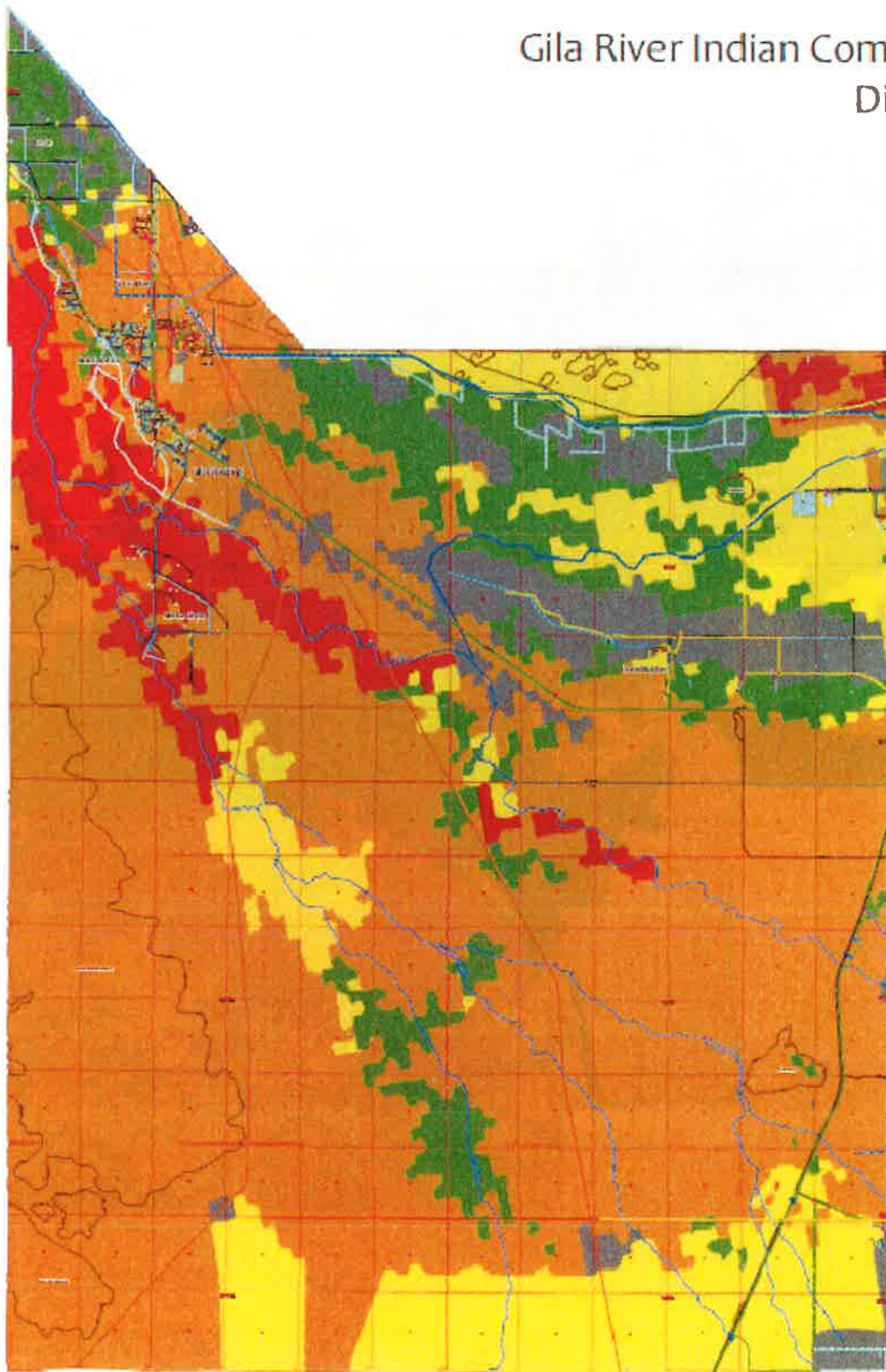
Appendix 5: Wild Land Fire Potential Maps cont.

Gila River Indian Community
District 5



Appendix 5: Wild Land Fire Potential Maps cont.

Gila River Indian Community
District 6



5-14-15

Appendix 5: Wild Land Fire Potential Maps cont.

